

kaya nighe wardandi noongar boogera kidja whadjuk

Welcome to Country, this is Whadjuk Country and Talk

mary carroll park

VISION PLAN

COPYRIGHT STATEMENT FOR:
 Mary Carroll Park Vision Plan
 Our Reference: 8937-2965-13P rev G
 Copyright © 1987-2013
 Ecoscape (Australia) Pty Ltd
 ABN 70 070 128 675

Except as permitted under the Copyright Act 1968 (Cth), the whole or any part of this document may not be reproduced by any process, electronic or otherwise, without the specific written permission of the copyright owner, Ecoscape (Australia) Pty Ltd. This includes microcopying, photocopying or recording of any parts of the report.

Direct all inquiries to:
 Ecoscape (Australia) Pty Ltd
 9 Stirling Highway • PO Box 50 NORTH FREMANTLE WA 6159
 Ph: (08) 9430 8955 Fax: (08) 9430 8977

Revision	Author	Approved	Date
8937-2965-13R - DRAFT	NC / RC	PJ	30/05/2013
8937-2965-13R - Rev B	NC / RC	PJ	02/09/2013
8937-2965-13R - Rev C	NC	PJ	23/09/2013
8937-2965-13R - Rev D	NC	PJ	30/09/2013
8937-2965-13R - Rev E	NC	PJ	30/10/2013
8937-2965-13R - Rev F	NC	PJ	22/10/2014
8937-2965-13R - Rev G	NC	PJ	11/02/2015



ecoscape

CREATIVE SPACES

design » engage » inspire



Eudoria Street pathway.

Contents

Summary	3	Vision Plan	28
Why a Vision Plan...	5	Project Areas	32
What would you like to see change at Mary Carroll Park?	6	<i>Area 1 - Welcome to Country</i>	<i>34</i>
Vision	8	<i>Area 2 - Eudoria Street Hub</i>	<i>36</i>
Guiding Principles	9	<i>Area 3 - Causeway Connection</i>	<i>40</i>
Site Appreciation	10	<i>Area 4 - Eudoria to Croft Street Connection</i>	<i>44</i>
<i>Contextual Assessment</i>	<i>10</i>	<i>Area 5 - May Street Activation</i>	<i>46</i>
<i>Biophysical Site Assessment</i>	<i>11</i>	<i>Area 6 - Gosnells Primary School Learning Centre</i>	<i>48</i>
<i>Sociocultural Site Assessment</i>	<i>12</i>	<i>Area 7 - Gosnells Primary School Entrance</i>	<i>52</i>
<i>Site Responsive Opportunities</i>	<i>13</i>	<i>Area 8 - Bird Sanctuary Education</i>	<i>53</i>
Placemaking	15	<i>Area 9 - James Street Activation</i>	<i>54</i>
<i>Design Strategies</i>	<i>15</i>	<i>Area 10 - Barcombe Way Connections</i>	<i>56</i>
<i>Site Inspired Colour Palette</i>	<i>16</i>	<i>Area 11 - Shipton Street Activation</i>	<i>58</i>
<i>Wayfinding Strategy</i>	<i>18</i>	<i>Area 12 - James Street Wetland Management</i>	<i>60</i>
<i>Network and Legibility</i>	<i>18</i>	<i>Area 13 - Special Habitat Areas</i>	<i>61</i>
<i>Major Directional Signage</i>	<i>20</i>	<i>Typical Construction Requirements</i>	<i>61</i>
<i>Minor Directional Signage</i>	<i>21</i>	References	62
<i>Design Guidelines</i>	<i>23</i>	Appendices	63
<i>Thematic Analysis of Mary Carroll Park</i>	<i>25</i>	<i>Consultation and Attendees</i>	<i>64</i>
<i>Aboriginal Connections</i>	<i>27</i>		



LEGEND

	EXTENT OF SITE - PRIMARY
	EXTENT OF SITE - SECONDARY
EXISTING	
	TREES
	WETLAND VEGETATION
	UPLAND VEGETATION
	FENCE (TO REMAIN)
	FENCE (TO BE REMOVED)
	TURF
	FOOTPATH
	BRIDGE (TO BE REPLACED)
	BUILT FORM
	WATER CORP INFRASTRUCTURE
	BUS STOP
PROPOSED	
	STREET TREES (REFER WAYFINDING STRATEGY)
	WETLAND TREES
	UPLAND TREES
	LANDSCAPE MASS PLANTING
	REVEGETATION
	IRRIGATED TURF
	MULCH
	VEGETATION MANAGEMENT AREA
	DRY LAND PAVING PATTERN - MAJOR NODE
	DRY LAND PAVING PATTERN - MINOR NODE
	FOOTPATH
	BOARDWALK / DECK NODE
	SUSPENSION BRIDGE
	PRE-CAST CONCRETE TERRACES
	GRAVEL PAVING
	BOLLARDS / GATE
	WALL
	BENCH SEATING
	PICNIC TABLE / BBQ / BIN / DRINK FOUNTAIN
	LIGHT POLE
	SHADE STRUCTURE
	PLAY EQUIPMENT
	KIOSK / STORAGE AREA
	ENHANCEMENT TO EXISTING ROUND-ABOUT
	NEW ROUND-ABOUT AND PLANTING
	WELCOME TO COUNTRY / ART ELEMENTS
	DIRECTIONAL SIGNAGE - MAJOR
	DIRECTIONAL SIGNAGE - MINOR
	BIRD ROOSTING ART ELEMENTS
	NATURE PLAY INTERPRETATION
	FENCE ARTWORK

Summary

Purpose of Vision Plan

Provide an integrated package of environmental enhancements and strategies for Mary Carroll Park (MCP).

- Achieve an outstanding recreational asset that complements and expresses the unique natural environment and story of place.
- Make best use of limited recreational space and possible funding and works.

Mary Carroll Park's Site Context

- A large protected natural asset.
- Conservation Category Wetland and Bush Forever Site (124).
- Total site area 22ha (approximately 57% water body) divided into two wetland areas by Eudoria Street.
- A major bird sanctuary important for migratory birds: listed as "must see" by Birds Australia (national ornithological society).
- Great potential for nature recreation, both as a local and regional asset.
- Existing facilities are basic and include toilets, conventional play equipment, barbeque facilities, seating and paths.
- Within walking distance of the Gosnells Town Centre (10mins to train station).
- Located centrally within a large established residential catchment (over 500 properties within 2-3mins walking distance), close to future urban development (Della Vedova landholding) and adjoins Gosnells Primary School.

Vision Plan Concept

Design response and place interpretation that expresses the environmental and community story of Mary Carroll Park: "Learning from the environment" is the overriding theme.

Enhancements include:

- nature play, boardwalks, paths, picnic facilities, interpretation signage and features, public art, on-street parking, small kiosk, upgraded toilets, storage for volunteer groups and landscape improvements.

Design strategy:

- Consolidate the activity hub on Eudoria Street and mark entry into the Park.
- Design treatments to unify the Park (integrate the two wetland areas and broaden recreational scope).
- Create a recreational circuit around both wetlands through improved path linkage (2.5km recreational circuit).
- Encourage community use of the Park through small activity nodes that connect to local streets and achieve activity linkage within the recreational circuits.
- Integrate Gosnells Primary School to the Park.
- Improve town centre connection through streetscape enhancement, wayfinding signage and other facilities that promote recreational linkage.

Implementation

- Staged implementation as funds and resources become available: Priority to establish the Main Recreational Node (Areas 1-3) and to achieve the Large Wetland Recreational Circuit (Areas 4-8). The Small Wetland Recreational Circuit (Areas 9-12) should be enhanced as opportunity arises. Environmental Rehabilitation and Management (Area 13) will be ongoing.
- Various funding sources and partnerships are possible: Friends of Mary Carroll Park (FoMCP), Gosnells Primary School, City of Gosnells, landcare groups and agencies.

The Vision Plan is divided into a series of project areas detailing design themes and elements, interpretation storylines and forms.

Main Recreational Node

1. Welcome to Country
2. Eudoria Street Hub
3. Causeway Connection

Large Wetland Recreational Circuit

4. Eudoria to Croft Street Connection
5. May Street Activation
6. Gosnells Primary School Learning Centre
7. Gosnells Primary School Entrance
8. Bird Sanctuary Education

Small Wetland Recreational Circuit

9. James Street Activation
10. Barcombe Way Connections
11. Shipton Street Activation
12. James Street Wetland Management

Environmental Rehabilitation and Management

13. Special Habitat Areas

Recommendations and Opinions of Probable Costs have been provided in a separate document.



Mary Carroll Park wetland - Burnoru (Dry Season).



Mary Carroll Park wetland - Jilba (Wet Season).

Why a Vision Plan...

In 2013 the City of Gosnells identified the need to embrace and enhance their local natural and recreational asset, Mary Carroll Park (MCP), not only for the Gosnells community but also for visitors and future generations. The City identified many project objectives, including:

- To deliver a highly visual document that establishes an integrated package of environmental enhancements and strategies for Mary Carroll Park.
- To consult with key stakeholders throughout the planning of the Vision Plan.
- To prepare a concept plan that expresses the Park's unique environmental value as a nature reserve and strengthen its urban context.
- To provide a Vision Plan for the entire Study Area and a concept plan for the Primary Study Area.
- To provide recommendations and indicative designs illustrating the improvements.
- To provide indicative costings and staging opportunities.

The MCP Vision Plan is the community's long term aspirations for the site. The Vision Plan:

- reflects the values and beliefs of those who have contributed through the engagement process
- communicates both the qualities and performance that are desired
- projects well into the future, is enduring yet flexible and not time bound
- is grounded in the existing strengths and opportunities of the MCP precinct
- is ambitious in that it seeks the highest quality outcome and builds confidence through shared aspiration.

A design collaborative consisting of landscape architects and interpretive designers was engaged by the City of Gosnells to prepare the Vision Plan.



What would you like to see change at Mary Carroll Park?

Great places stem from a community vision. The process of creating great places is very much a journey of discovery, involving many different groups working together towards a common vision. Underlying this common vision is always the local community. Visions for development are only meaningful and successful in the long term if they are owned by the community.

In order to create a common vision for Mary Carroll Park the design collaborative maintained a continuous dialogue between the community and the City of Gosnells. The philosophy was that the more voices heard and taken account for, the richer the final place vision will be.

The design collaborative engaged with the community in a number of different ways during the life of the project; including spontaneous discussions on site with locals, two workshops held at Gosnells Primary School, one-on-one consultation and a site tour with Aboriginal community members.

A full list of participants is located in the Appendices.

Children should be involved in simple land care to help their 'connectedness' to their environment.



Links between the wetland and the primary school.



Aspirations...

The following points were raised during the consultation process:

- Inability to walk around the Park and difficult to know where you are and where to go.
- Interpret iconic species.
- Lighting along paths to feel safe.
- Different types of interpretation including environmental, historical and cultural.
- Limited seating – need more along paths.

- Include environmentally - friendly aspects.
- Have public art in and around the Park.
- Need to manage fire risks.
- Weed and habitat management consideration early in the process, as local fauna is nesting in weed infested areas.
- People dumping wheelie bin rubbish in the Park – especially the properties backing onto the park.
- Signs that describe the local plants and how they were used by Aboriginal people.



Snapshot ...

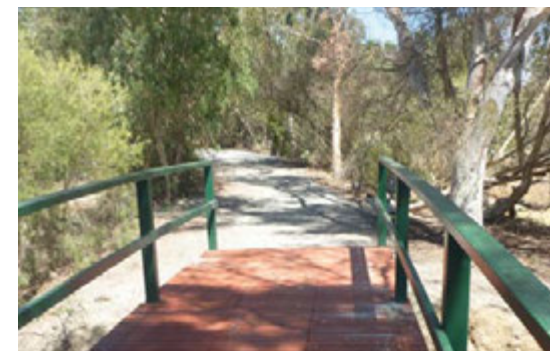


Ensure a connection to 'Whadjuk' Country and the six Noongar seasons.

Wow! What a beautiful place to visit.

- There are some parts of the Park (very few left) where you can look and think – this is what Gosnells would have been like before white man.
- School children would use the Park more if more facilities were provided.
- Need to stop trail bike and 4WD's accessing the wetland – they are noisy and scare the local animals.
- Nature based play areas not plastic play equipment.
- Nature boardwalk through degraded areas to access wetland.
- Community / school coffee meeting place – maybe a kiosk.
- Integrate community projects like planting days.
- Family friendly environment with walking / jogging paths and boardwalks for viewing the natural landscape.
- Education about what a wetland is and it's natural cycles.
- Incorporate a 'living classroom' so children can see how the environment works.

Great picnic areas and nice relaxing walks. Need to remember the trees and nature.



Vision

Mary Carroll Park is recognised as an important environmental asset which, under the Vision Plan enhancements, will also be an extraordinary place for the community to live, students to learn and visitors to experience. The Vision will be achieved through shared responsibility, collaborative ideas and a culture of innovation and respect for the complex social and natural asset.



Guiding Principles

The Guiding Principles articulate the community values underpinning the Vision Plan and further communicate the interconnected elements within the Vision Plan. The Principles have guided decision-making in the development of the page 2 concept plan and inform the strategies proposed for the MCP Precinct. They:

- are human-centered
- engender shared ownership and responsibility for enacting them
- are specific to MCP and the people, places and processes that shape the Precinct
- are a guide and are not prescriptive.

Collaborative Community

Everyone contributes to, and shares responsibility for, the future of MCP and the surrounding urban fabric.

Sense of Place

Our places embody our values and our uniqueness; they reflect our social and cultural diversity and celebrate our natural environment and social heritage.

Regeneration

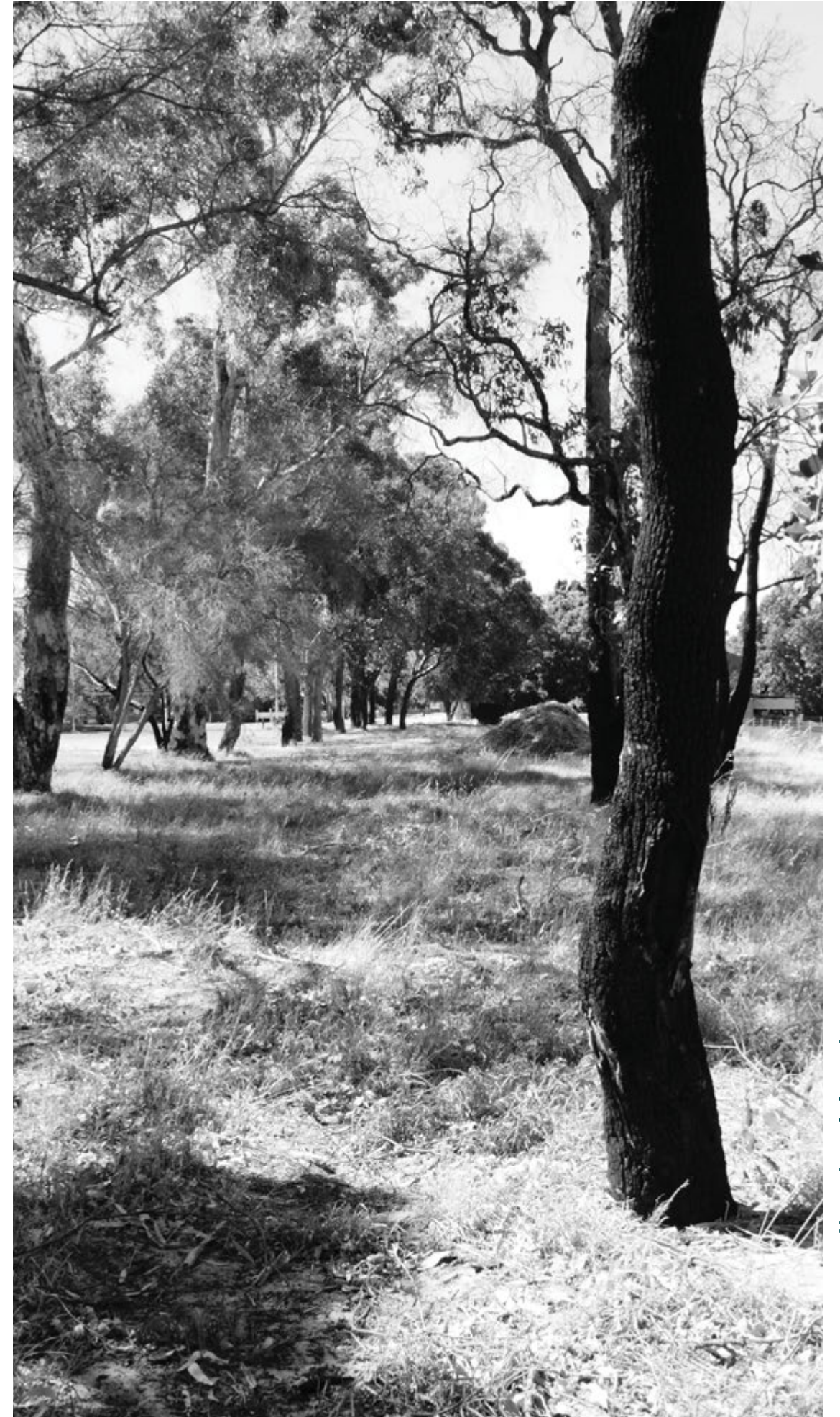
We nurture and protect the natural environment and biodiversity within the urban fabric through environmental enhancement, interpretation and educational drivers.

Connectedness

Our places are accessible and connected; they offer resilient choices whilst contributing to our health and wellbeing.

Activation

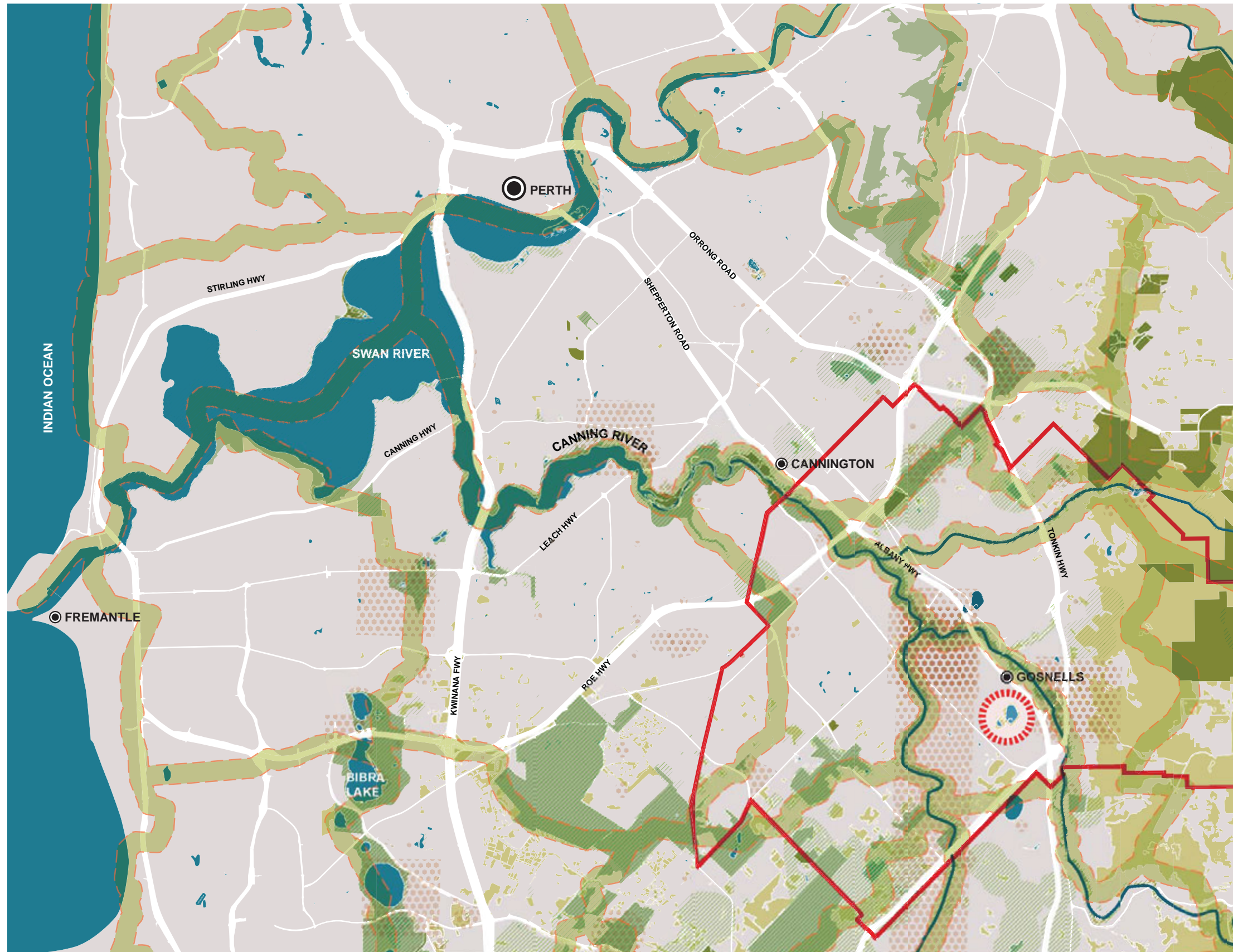
Our open spaces connect people with the environment, are creatively integrated by balancing safety and functionality, and support physical activity and social interaction.







Gosnells Primary School and Bird Sanctuary interface.

Site Appreciation

Contextual Assessment



LEGEND

-  MARY CARROLL PARK
-  GOSNELLS LGA BOUNDARY
-  WATER FORM
-  VEGETATION EXTENT (WAPC 2009)
-  BUSH FOREVER (DPI 2000)
-  DEC MANAGED LANDS
-  DIA HERITAGE SITES
-  ENVIRONMENTALLY SENSITIVE AREA
-  PERTH METROPOLITAN REGIONAL ECOLOGICAL LINKAGES (WALGA 2003)

LANDSCAPE CHARACTER TYPE

SWAN COASTAL PLAIN

The Swan Coastal Plain is built up of sediments that contrast the igneous and metamorphic rock of the Darling Plateau. The Plain consists of wide belts of sediment roughly parallel with the present coastline: the wind-blown sediments are to the west and the water-laid sediments are to the east. Alluvial sediments of the Pinjarra Plain and the three successive dune systems to the west are relatively young, accumulating in the Pleistocene and Recent (2.5 million years-10,000 years) while the granites and metamorphic rocks of the Darling Scarp are more than 2 billion years. Old rivers of the Swan Coastal Plain tend to flow north south until they can snake around the end of the lineal dune system. Each land formation has distinct geology, topography, soils and vegetation. Mary Carroll Park sits beyond the dune system within the Pinjarra Plain, a land formation made up of relatively fertile soils. *(Reading the Remote, 1972)*

Biophysical Site Assessment

DRAINAGE

LIES BETWEEN A CHAIN OF NORTH SOUTH WETLANDS



GEOLOGICAL

BASSENEAN SAND FROM THE PLEISTOCENE PERIOD



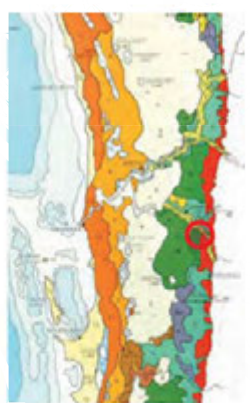
PLANT FORMATIONS

BETWEEN LOW CLOSED FOREST AND OPEN WOODLAND

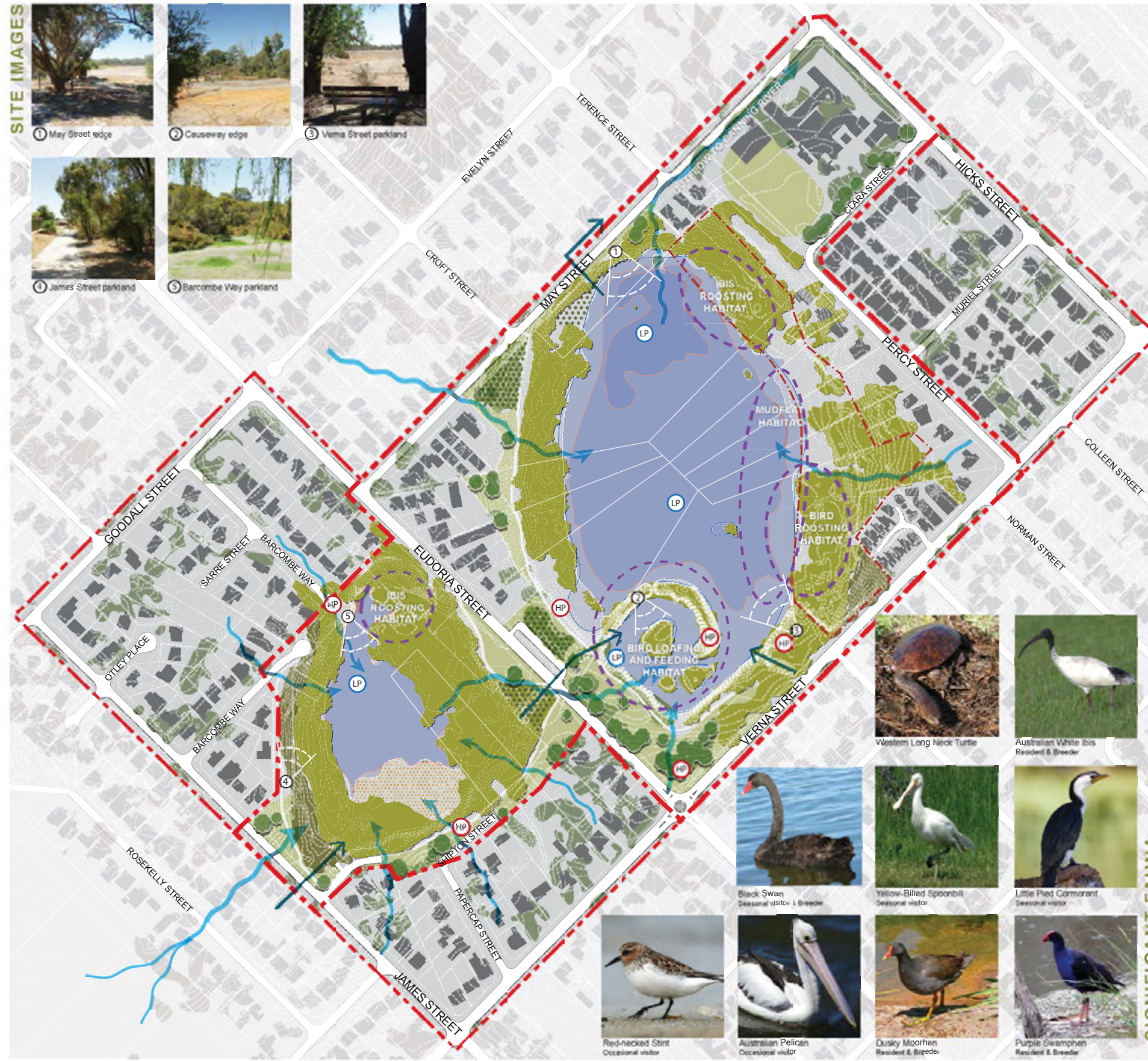


SOIL ASSOCIATIONS

BETWEEN SOUTHERN RIVER AND SWAN SYSTEM



SITE IMAGES



LEGEND

- PRIMARY STUDY AREA
- SECONDARY STUDY AREA
- CONTOURS
- HIGH POINTS & LOW POINTS (HP, LP)
- SIGNIFICANT EXISTING WETLAND VEGETATION
- SIGNIFICANT EXISTING UPLAND VEGETATION
- SIGNIFICANT EXISTING TREE - IN TURF
- WEED SPECIES
- REVEGETATION
- TURF
- HABITAT
- OVERLAND DRAINAGE FLOW
- CONSTRUCTED DRAINAGE FLOW
- BIRD SANCTUARY
- LAKE WATER LEVEL - LOW / HIGH

CLIMATIC INFLUENCES

- winter sunset
- summer sunset
- summer sunrise
- summer afternoon sea breeze
- summer morning easterlies
- strong winter storms

ACID SULPHATE SOIL RISK

- High to moderate ASS disturbance risk (<3m from surface)
- Moderate to low ASS disturbance risk (<3m from surface)

CAFWA (2008) Acid Sulphate Soils (Risk Map, Swan Coastal Plain, Digital Dataset, Department of Agriculture and Food Western Australia, Perth.

MARY CARROLL PARK IS A CONSERVATION CATEGORY WETLAND (DEC GEOMORPHIC WETLAND DATA SET)

VEGETATION COMPLEX

Heddie Complex 29 : Forrestfield Complex
Vegetation ranges from open forest of *C. calophylla*, *E. wandoo* & *E. marginata* to open forest of *E. marginata*, *C. calophylla*, *C. fraseriana* & *Banksia* spp.
Fringing woodland of *E. rudis* in the gullies that dissect this landform.

Heddie, et al (1980), 'Vegetation complexes of the Darling System Western Australia', in M Mulcahy (ed), Atlas of Natural Resources, Darling System Western Australia, Department of Conservation and Environment, Perth, pp. 25-33 and accompanying map.

SIGNIFICANT FAUNA

- Western Long Neck Turtle
- Australian White Ibis Resident & Breeder
- Black Swan Seasonal visitor & Breeder
- Yellow-Billed Spoonbill Seasonal visitor
- Little Pied Cormorant Seasonal visitor
- Red-necked Stint Occasional visitor
- Australian Pelican Occasional visitor
- Dusky Moorhen Resident & Breeder
- Purple Swamphen Resident & Breeder

Sociocultural Site Assessment

TOWN CENTRE

DISTANCE TO MARY CARROLL PARK



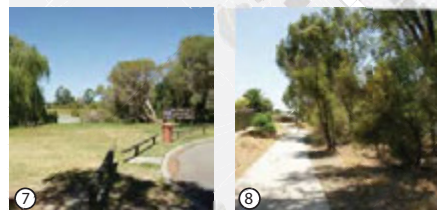
ROAD HIERARCHY

CONNECTION TO MARY CARROLL PARK



PARK NETWORK

LOCAL PARK SYSTEM



- LEGEND**
- PRIMARY SITE BOUNDARY
 - - - SECONDARY SITE BOUNDARY
 - PRIVATE LAND
 - MARY CARROLL PARK MANAGEMENT AREA (COG MANAGED LANDS AND STATE LANDS)
 - ACTIVE TURF AREA
 - PASSIVE TURF AREA
 - VEGETATION
 - 40KM/H VEHICLE SPEED LIMIT
 - 60KM/H VEHICLE SPEED LIMIT
 - CYCLE ROUTE
 - PATH - CONCRETE
 - PATH - FOOT BRIDGE
 - KEY ARRIVAL POINT
 - SECONDARY ARRIVAL POINT
 - CAR PARKING
 - KEY ASPECT / VIEWS
 - LANDSCAPE OPPORTUNITIES FROM SURROUNDING STREETS
 - CLOSED VIEWS
 - FILTERED VIEWS
 - URBAN PARK INTERFACE (INCONSISTENT TREATMENTS - IE. SOME SURVEILLANCE AND AREAS OF LOW AMENITY)
 - CHAIN LINK FENCE
 - LOW PINE PUBLIC FENCE
 - BOLLARDS
 - NODE
 - BUS STOP
 - TOILET FACILITIES
 - EVIDENCE OF ANTI-SOCIAL BEHAVIOUR
 - DRAINAGE OUTLET
 - DRAINAGE INLET



Site Responsive Opportunities



