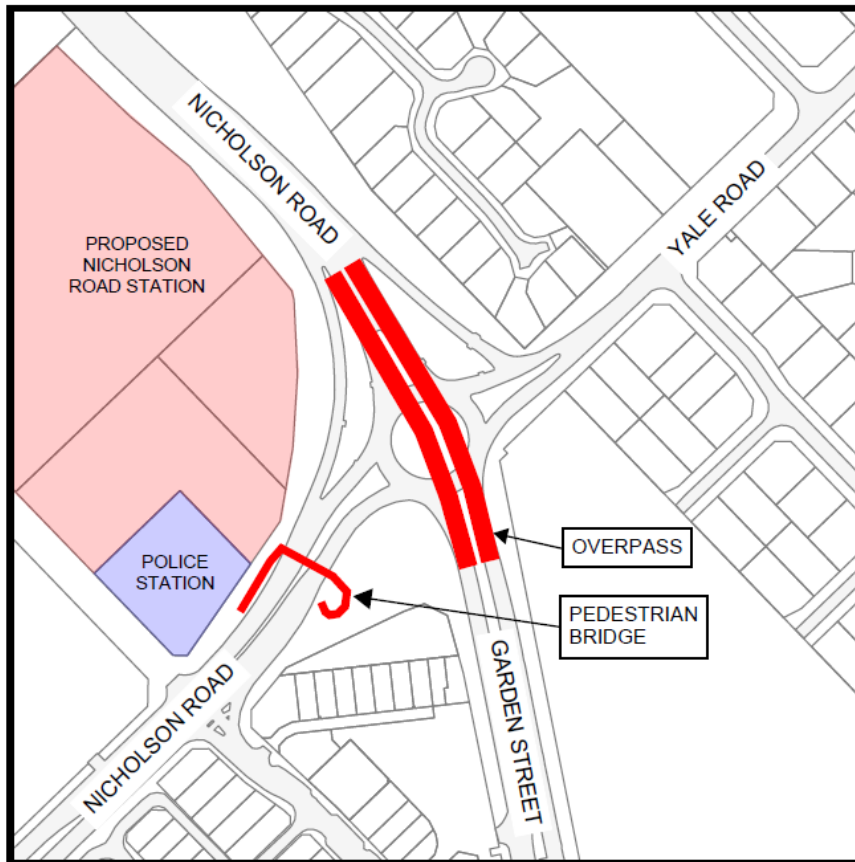


## TRANSPORT POSITION STATEMENT

### Vehicle Overpass and Pedestrian Bridge - Nicholson Road, Yale Road and Garden Street, Canning Vale



#### CITY OF GOSNELLS CORPORATE BUSINESS PLAN 2019-2023

##### ***Strategic Priority 4: Economy – Businesses are supported and the economy is growing***

*Goal 4.3 Accelerate the pace of infrastructure improvements including road, rail, public transport, utilities and digital connectivity.*

#### **COUNCIL'S POSITION**

The existing roundabout and immediate road environment is not performing to a level that is acceptable, both from a congestion and safety point of view for both vehicles and non-motorised traffic. The location of the new train station will further increase the congestion and safety issues.

Provision of grade separation including a vehicle overpass and a pedestrian bridge adjacent to the roundabout is the only way in which the train station precinct can operate efficiently and safely. Consequently Council:

1. Supports the design and construction of a vehicle overpass from Nicholson Road to Garden Street and a pedestrian bridge over Nicholson Road as shown in the above plan.
2. Requests the Minister for Transport, Planning and Lands include these works in the current train station project scope to ensure completion by the expected opening of the station precinct in 2023.